

TWO HOLE STANDOFF HANGER AND RESTRAINT

MODEL LV-772-R



DESCRIPTION:

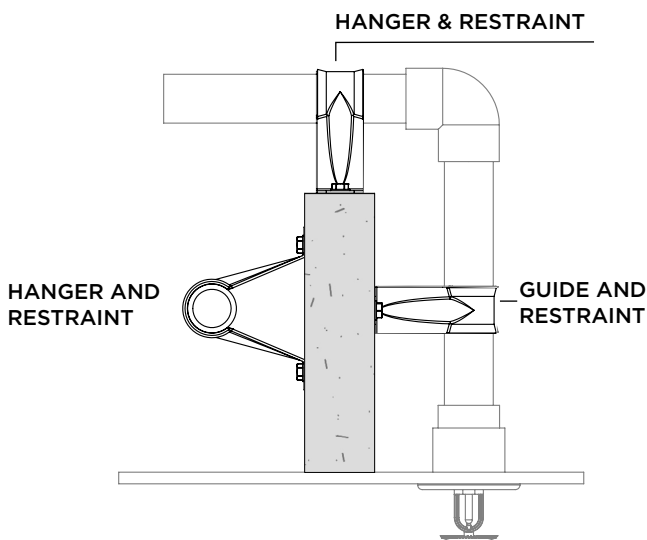
- Hanger and surge restraint for horizontal CPVC, steel, and copper piping when installed on the top, bottom, and side of the supporting structure.
- Guide for vertical CPVC, steel, and copper piping when installed on the side of the supporting structure.
- Horizontal and vertical seismic restraint per NFPA 13-2016 requirements
- May be installed with concrete, steel structural members, and other structural members with fasteners which comply with the requirements of NFPA 13.

INSTALLATION:

- Snap hanger over pipe. If needed, squeeze strap back around pipe
- CPVC pipe must be allowed to slide freely through the secure hanger to mounting surface with screws provided or with listed fasteners.

FEATURES:

- Beveled edge design helps protect the CPVC pipe from any rough surface and eliminates pipe abrasion
- Easily attaches to wood structure with #10 x 1" hex washer head self-threading screw supplied with product
- No pre-drilling required
- Bottom of pipe is offset 1-1/2" from the structure. Eliminates wooden spacer blocks.
- Ordering: Specify CPVC pipe size, model number and description

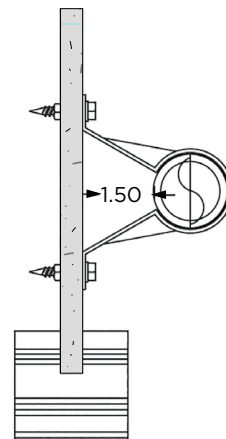


INSTALLATION BACKING NUT

Hanger 1 - at top fastener

Restraint 2 - on each fastener

(Per NFPA-13D and NFPA-13R)

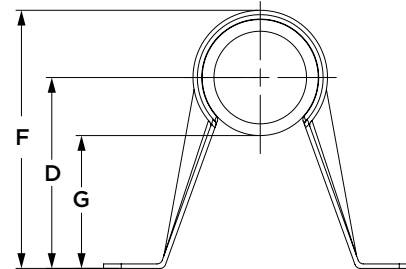
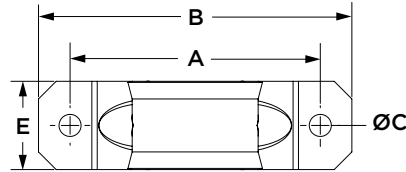
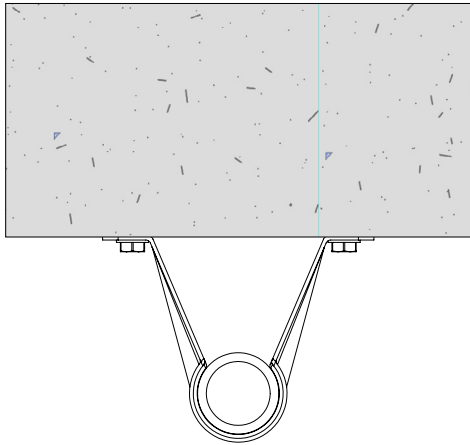


TWO HOLE STANDOFF HANGER AND RESTRAINT

MODEL LV-772-R



HANGER AND RESTRAINT



TWO HOLE STANDOFF HANGER AND RESTRAINT (in.)

CPVC Pipe Size	A	B	ØC	D	E	F	G	Max. Hanger Spacing (ft.)	Approx. Weight/100 (lbs.)
3/4	2-3/4	3-1/2	1/4	2	1	2-5/8	1-1/2	5-1/2	11
1	2-13/16	3-1/2	1/4	2-3/16	1	2-15/16	1-1/2	6	12
1-1/4	2-13/16	3-1/2	1/4	2-5/16	1	3-1/4	1-1/2	6-1/2	13
1-1/2	3-5/8	4-1/4	1/4	2-7/16	1	3-1/2	1-1/2	7	14
2	3-11/16	4-3/8	1/4	2-11/16	1	4	1-1/2	8	16

LISTED FASTENERS

Pipe	Wood & Composite Beams	Steel (18ga. Minimum)
CPVC	Screw Supplied or #10 x 1" TEK Screw	#14 x 1" TEK Screw or 1/4" x 1" TEK Screw
Steel and Copper	#14 x 1" TEK Screw or 1/4" x 1 1/2" Lag Screw	#14 x 1" TEK Screw or 1/4" x 1" TEK Screw

PROJECT	APPROVAL STAMP
PROJECT:	<input type="checkbox"/> APPROVED
ADDRESS:	<input type="checkbox"/> APPROVED AS NOTED
ENGINEER:	<input type="checkbox"/> NOT APPROVED
SUBMITTAL DATA:	REMARKS:
NOTES 1:	
NOTES 2:	