



STEEL MERCHANT COUPLING

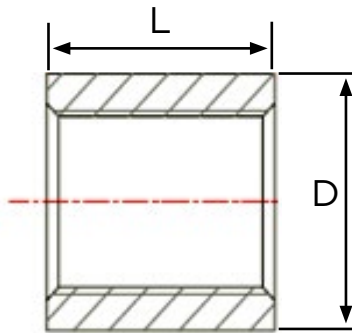
MODEL LVMCP



FEATURES:

- Dimensions and materials conform to ASTM A865
- Threads conform to ASME B1.20.1
- Available black or galvanized (A5ME B633)
- Available: 1/8" - 6" NPS

1/8" - 2" -straight thread
2-1/2" - 6" tapered thread



STEEL STANDARD COUPLINGS				
Size (In.)	D (In.)	L (In.)	Inner	Master
1/8	0.563	0.813	25	600
1/4	0.719	1.188	25	600
3/8	0.875	1.188	25	600
3/4	1.313	1.625	25	200
1	1.576	2.000	25	150
1-1/4	1.900	2.063	25	100
1-1/2	2.200	2.063	25	75
2	2.750	2.125	25	50
2-1/2	3.250	3.125	—	20
3	4.000	3.250	—	15
4	5.000	3.500	—	10
5	6.296	3.750	—	5
6	7.390	4.000	—	3

PROJECT	APPROVAL STAMP
PROJECT:	<input type="checkbox"/> APPROVED
ADDRESS:	<input type="checkbox"/> APPROVED AS NOTED
ENGINEER:	<input type="checkbox"/> NOT APPROVED
SUBMITTAL DATA:	REMARKS:
NOTES 1:	
NOTES 2:	