

RISER CHECK VALVE with INSPECTION COVER

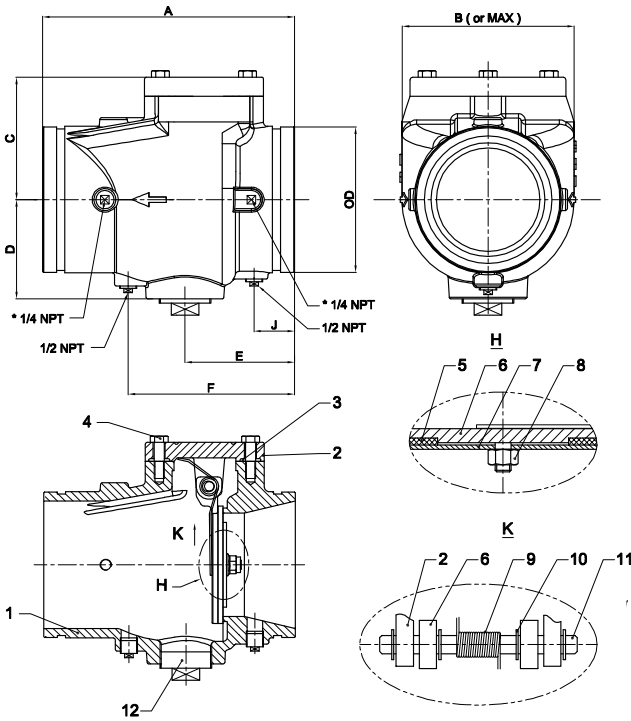
MODEL LVRCV-RF



This item should be ordered with Lansdale Model -LVRT which contains all necessary trim for use as a Riser Check Valve

FEATURES:

- Grooved connections are cut in accordance with AWWA C606
- Maximum Working Pressure: 300 PSI
- Removable inspection cover
- Spring assisted clapper
- Machined with NPT threads and ready to be assembled as a Riser Check Valve



MATERIAL SPECIFICATION

PART NO.	PART	MATERIAL	ASTM SPECIFICATION
1	Body	Ductile Iron	ASTM A536 Gr. 65-45-12
2	Cover	Ductile Iron	ASTM A536 Gr. 65-45-12
3	Cover Gasket	Rubber	D2000 EPDM
4	Bolts & Washers	Carbon Steel	ASTM A307 Gr.B
5	Clapper Facing	Rubber	D2000 EPDM
6	Clapper 2" - 8"	Stainless Steel	ASTM A276 Gr. 304
	Clapper 10" - 12"	Ductile Iron	ASTM A536 Gr. 65-45-12
7	Retaining Disc	Stainless Steel	ASTM A276 Gr. 304
8	Locknut	Stainless Steel	ASTM A276 Gr. 304
9	Spring	Stainless Steel	ASTM A276 Gr. 304
10	Retaining Ring	Stainless Steel	ASTM A276 Gr. 304
11	Hinge Shaft	Stainless Steel	ASTM A276 Gr. 304
12*	Plug	Malleable Iron	ASTM A47 Gr. 22010

NOMINAL PIPE SIZE		NOMINAL DIMENSIONS						
VALVE SIZE (IN)	PIPE O.D./ (IN)	A	B	C	D	E	F	J
2	2.38	6.75	4.10	2.48	2.17	3.27	4.76	1.63
2-1/2	2.88	8.00	4.57	2.76	2.76	3.86	5.87	1.65
3	3.50	8.37	5.35	3.11	3.15	3.86	5.87	1.65
4	4.50	9.63	6.30	3.98	3.62	4.53	7.13	1.81
5	5.56	10.50	7.40	4.46	4.13	4.90	7.50	1.75
6	6.63	11.50	7.87	5.59	4.53	5.00	7.60	1.85
8	8.63	14.00	9.92	6.85	5.51	5.43	8.46	2.13
10	10.75	18.00	12.38	8.62	6.41	7.50	10.50	3.00
12	12.75	21.00	14.28	9.93	7.27	7.62	10.62	2.75

Drain Size

- *No.(12) Valve size 2" plug is 3/4" NPT
- Valve size 2.5"-3" plug is 1-1/4" NPT
- Valve size 4"-12" plug is 2" NPT

Red Enamel - RAL 3000 NSF-61

PROJECT	APPROVAL STAMP
PROJECT:	<input type="checkbox"/> APPROVED
ADDRESS:	<input type="checkbox"/> APPROVED AS NOTED
ENGINEER:	<input type="checkbox"/> NOT APPROVED
SUBMITTAL DATA:	REMARKS:
NOTES 1:	
NOTES 2:	