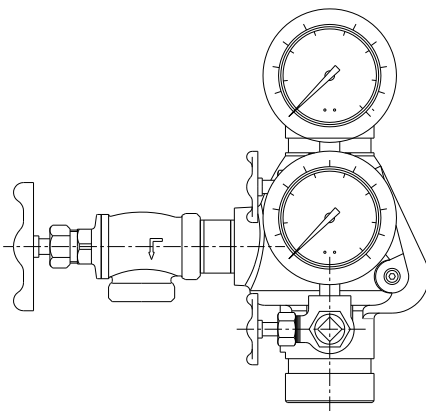


RISER CHECK ASSEMBLY (SHOT GUN RISER) MODEL LVRCGG-400



DESCRIPTION:

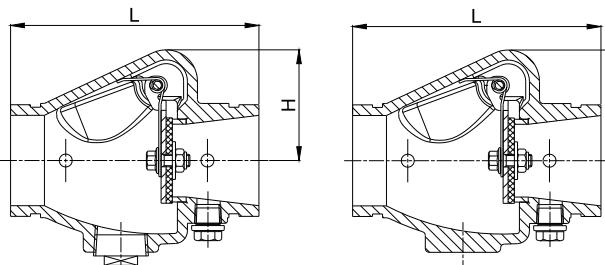
Lansdale Valve & Manufacturing's Riser Check Valve Assemblies are intended for use in wet pipe fire protection systems, as well as preaction systems where there is no need for a mechanical alarm. The use of a waterflow switch can provide an electronic alarm. Grooved end connections provide fast and economical installation of a UL/FM Approved coupling, such as Gemlock. When installed vertically the direction of flow arrow should point upward. For horizontal installation, the hinge pin must be located at the top. If used in preaction system the valve must be installed vertically.

FEATURES:

- Meet or exceed the requirements of UL 312 and FM 1210 standard
- Spring loaded for fast closure
- Drain plug at the bottom under the inlet end for attaching a drain valve
- Excellent flow characteristics
- Superior design featuring exceptionally low pressure losses at high flow rates
- Rubber disc facing and bronze seat ring
- Grooved connections are cut in accordance with AWWA C606 standard grooved specifications for steel pipe
- UL 312/ULC listed and FM 1210 approved
- Fusion bonded coating interior and exterior meet or exceed all applicable of AWWA C550 standard
- 400 PSI rated @ 0° C to 87° C

INSTALLATION:

The Lansdale Riser Check Valve shall be installed in accordance with NFPA 13, "Standard for the Installation of Sprinkler Systems," as well as the requirements of the local AHJ. The Riser Check is installed vertically, the direction of flow shall be up through the valve (install with flow arrow pointed up). Do not apply lubricants, sealants, or other chemicals to the clapper seal or seat. Install two rigid grooved couplings as per the manufactures' instructions. See Lansdales' O&M manual for further information and installation instructions.



MAIN DIMENSIONS (In.)							
SIZE							

MATERIAL SPECIFICATIONS		
PART NO.	MATERIAL	ASTM SPECIFICATION
Body	Ductile Iron	A536 Grade 65-45-12
Body Seat Ring	Bronze	B62 C83600
Disc	Stainless Steel	A351 Grade CF8
Disc Facing	Rubber	D2000 EPDM
Spring	Stainless Steel	A276 Grade 302
Hinge Pin	Stainless Steel	A276 Grade 304
Disc Facing Bolt/Nut	Stainless Steel	A276 Grade 304
Angle Drain Valve	Bronze	B148 C95500
3-Way Valves	Bronze	B148 C95500
Nipples	Stainless Steel	A276 Grade 304
Air/Water Gauges	—	—

PROJECT		APPROVAL STAMP
PROJECT:		<input type="checkbox"/> APPROVED
ADDRESS:		<input type="checkbox"/> APPROVED AS NOTED
ENGINEER:		<input type="checkbox"/> NOT APPROVED
SUBMITTAL DATA:		REMARKS:
NOTES 1:		
NOTES 2:		