

LANSDALE

VALVE & MANUFACTURING

1040 Broadway Westville, NJ 08093 / Phone: (800)908-0523 / Fax: (856)456-9223 / www.gemfiresprinkler.com

PRESSURE RELIEF VALVE

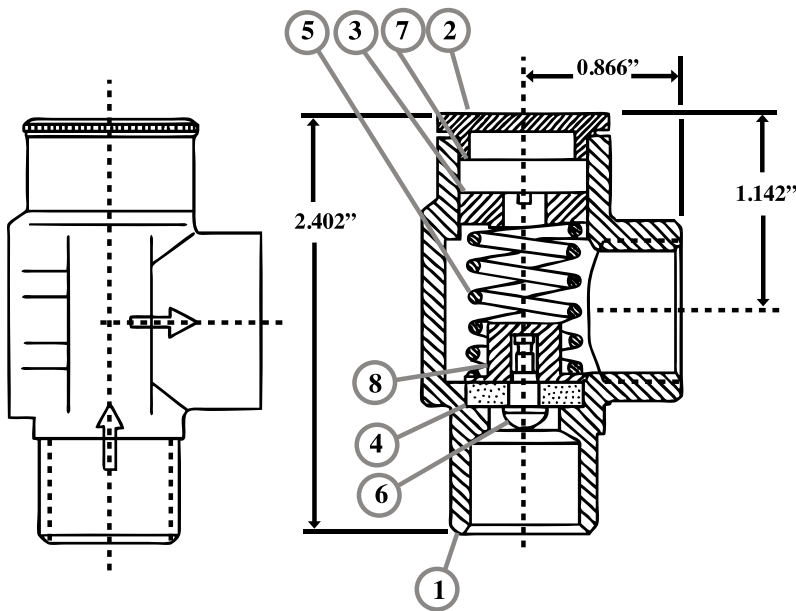
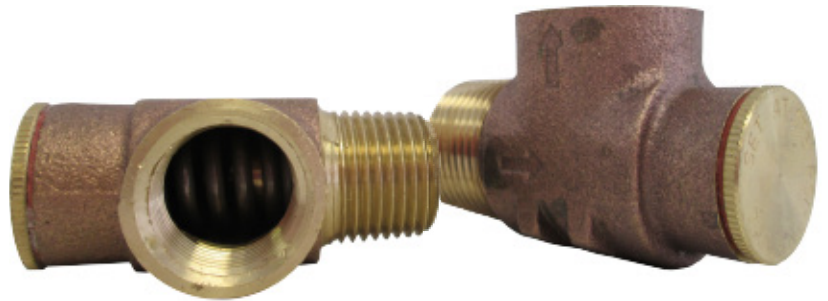
Used in grid and residential systems or where pressure relief is required. Set to 175 PSI.

Model Numbers:

1/2" x 1/2" (150 psi) 700-375-00080

1/2" x 1/2" (175 psi) 700-375-00040

3/4" x 3/4" (175 psi) 700-375-00040



MATERIAL LIST		
NUMBER	DESCRIPTION	MATERIAL
1	Body	Cast Brass
2	Cap	Brass
3	ADJ Cap	Brass
4	Seal	Rubber
5	Spring	Stainless
6	Screw	Brass
7	Washer	Fibre
8	Seal Seat	Brass

PROJECT	APPROVAL STAMP
PROJECT:	<input type="checkbox"/> APPROVED
ADDRESS:	<input type="checkbox"/> APPROVED AS NOTED
ENGINEER:	<input type="checkbox"/> NOT APPROVED
SUBMITTAL DATA:	REMARKS:
NOTES 1:	
NOTES 2:	