

LEAD FREE BRONZE FITTINGS

CLASS 125 lbs.



FEATURES:

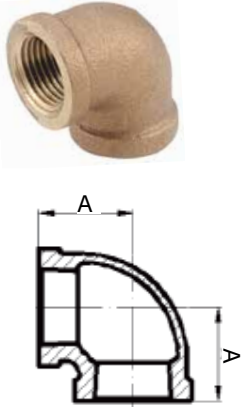
- Approved to ANSI/NSF 61-4 California AB 1953
- Meets Federal State Drinking Water Act, Lead Free Requirement
- Bronze fittings conform to AWWA C800
- Bronze castings conform to ASTM B62; C83600; ASTM B824
- Bronze fittings dimensions conform to ASME B16.15/Union Dimensions to WW-V-516-B
- NPT threads on all fittings conform to ASME B1.20.1

Lead Free products contain less than .25% weighted average lead content on wetted surfaces.

LEAD FREE BRONZE COMPOSITION				
	COPPER	TIN	LEAD	ZINC
Min.	87.00%	4.00%	0.00%	2.00%
Max.	91.00%	6.00%	0.10%	4.00%
	IRON	NICKEL	ANTIMONY	PHOSPHORUS
Min.	0.00%	0.00%	0.00%	0.00%
Max.	0.30%	1.00%	0.25%	0.05%
	SULFUR	ALUMINUM	SILICON	BISMUTH
Min.	0.00%	0.00%	0.00%	1.70%
Max.	0.08%	0.005%	0.005%	2.70%

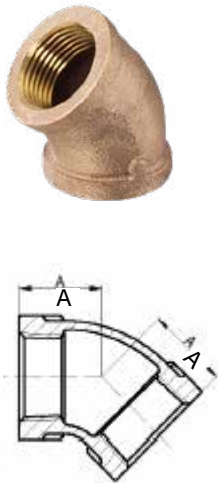
LEAD FREE CAST BRONZE FITTINGS

CLASS 125 lbs.



LEAD FREE BRONZE ELBOW 90° - LVBRL

Size (in)	A (in)	Inner Carton	Outer Carton	Pallet
1/8	.54	50	600	28,800
1/4	.71	35	420	20,160
3/8	.82	90	360	17,280
1/2	1.01	50	200	9,600
3/4	1.18	35	105	5,040
1	1.43	20	60	2,880
1 1/4	1.69	20	40	1,920
1 1/2	1.84	15	30	1,440
2	2.12	8	16	768
2 1/2	2.70	-	12	576
3	3.08	-	8	384
4	3.79	-	2	96

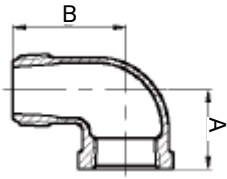


LEAD FREE BRONZE ELBOW 45° - LVBRHL

Size (in)	A (in)	Inner Carton	Outer Carton	Pallet
1/8	.42	50	600	28,800
1/4	.56	30	360	17,280
3/8	.63	75	300	14,400
1/2	.78	50	200	9,600
3/4	.78	40	120	5,760
1	1.06	20	60	2,880
1 1/4	1.22	20	40	1,920
1 1/2	1.30	10	30	1,440
2	1.45	12	24	1,152
2 1/2	1.95	-	12	576
3	2.17	-	10	480
4	2.61	2	4	192

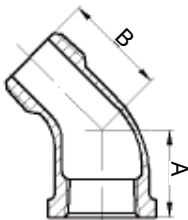
LEAD FREE CAST BRONZE FITTINGS

CLASS 125 lbs.



LEAD FREE BRONZE STREET ELBOW 90° LVBRSTL

Size (in)	A (in)	B (in)	Inner Carton	Outer Carton	Pallet
1/8	0.54	0.92	60	720	34,560
1/4	0.71	1.11	35	420	20,160
3/8	0.82	1.24	60	240	11,520
1/2	1.01	1.48	60	180	8,640
3/4	1.18	1.65	35	105	5,040
1	1.43	1.98	45	90	4,320
1 1/4	1.69	2.24	25	50	2,400
1 1/2	1.84	2.46	9	27	1,296
2	2.12	2.88	8	16	768
2 1/2	2.70	3.86	5	10	480
3	3.08	4.52	-	8	384

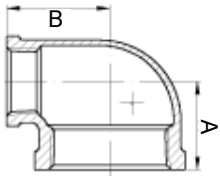


LEAD FREE BRONZE STREET ELBOW 45° LVBRSHL

Size (in)	A (in)	B (in)	Inner Carton	Outer Carton	Pallet
1/8	0.42	0.78	70	840	40,320
1/4	0.56	0.88	40	480	23,040
3/8	0.63	0.92	100	400	19,200
1/2	0.78	1.06	75	225	10,800
3/4	0.89	1.23	40	120	5,760
1	1.06	1.40	25	75	3,600
1 1/4	1.22	1.64	10	40	1,920
1 1/2	1.80	1.45	10	30	1,440
2	2.14	2.14	12	24	1,152

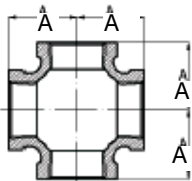
LEAD FREE CAST BRONZE FITTINGS

CLASS 125 lbs.



LEAD FREE BRONZE REDUCING ELBOW-LVBRRE

Size (in)	A (in)	B (in)	Inner Carton	Outer Carton	Pallet
3/8 X 1/4	0.75	0.79	90	360	17,280
1/2 X 1/4	0.95	0.95	60	240	11,520
1/2 X 3/8	0.96	0.90	60	240	11,520
3/4 X 1/8	1.02	1.06	40	160	7,680
3/4 X 1/4	1.04	1.06	40	160	7,680
3/4 X 3/8	1.12	1.12	40	160	7,680
3/4 X 1/2	1.08	1.11	40	160	7,680
1 X 1/2	1.20	1.24	25	100	4,800
1 X 3/4	1.30	1.31	50	100	4,800
1-1/4 X 1/2	1.34	1.52	20	80	3,840
1-1/4 X 3/4	1.40	1.58	15	60	2,880
1-1/4 X 1	1.52	1.60	10	40	1,920
1-1/2 X 1/2	1.26	1.50	15	60	2,880
1-1/2 X 3/4	1.50	1.73	10	40	1,920
1-1/2 X 1	1.52	1.69	10	40	1,920
2 x 1	1.71	2.01	14	28	1,344
2 x 1-1/2	1.89	2.07	10	20	960
2-1/2 x 2	2.39	2.60	6	12	576



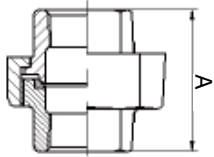
LEAD FREE BRONZE CROSS- LVBRCR

Size (in)	A (in)	Inner Carton	Outer Carton	Pallet
1/8	0.54	30	360	17,280
1/4	0.71	60	240	11,520
3/8	0.82	50	150	7,200
1/2	1.01	30	90	4,320
3/4	1.18	20	60	2,880
1	1.43	15	30	1,440
1 1/4	1.69	10	20	960
1 1/2	1.84	8	16	768
2	2.12	5	10	480

LEAD FREE CAST BRONZE FITTINGS

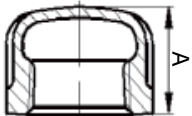
CLASS 125 lbs.

LEAD FREE BRONZE UNION - LVBRU



Size (in)	A (in)	Inner Carton	Outer Carton	Pallet
1/8	1.26	60	240	11,520
1/4	1.46	20	240	11,520
3/8	1.62	40	160	7,680
1/2	1.73	50	100	4,800
3/4	1.95	35	70	3,360
1	2.07	20	40	1,920
1 1/4	2.27	15	30	1,440
1 1/2	2.42	10	20	960
2	2.76	6	12	576
2 1/2	3.23	4	8	384
3	3.51	4	8	384
4	3.86	2	4	192

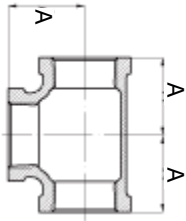
LEAD FREE BRONZE CAP - LVBRCP



Size (in)	A (in)	Inner Carton	Outer Carton	Pallet
1/8	0.49	120	1,440	69,120
1/4	0.59	80	960	46,080
3/8	0.65	60	720	34,560
1/2	0.76	75	300	14,400
3/4	0.84	40	160	7,680
1	0.99	25	100	4,800
1 1/4	1.10	20	80	3,840
1 1/2	1.15	18	54	2,592
2	1.32	12	36	1,728
2 1/2	1.70	20	40	1,920
3	1.80	8	24	1,152
4	2.08	6	12	576

LEAD FREE CAST BRONZE FITTINGS

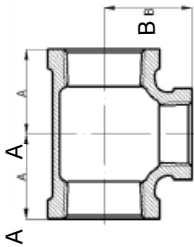
CLASS 125 lbs.



LEAD FREE BRONZE TEES - LVBRT

Size (in)	A (in)	Inner Carton	Outer Carton	Pallet
1/8	0.54	120	480	23,040
1/4	0.71	75	300	14,400
3/8	0.82	45	180	8,640
1/2	1.01	40	120	5,760
3/4	1.18	35	70	3,360
1	1.43	20	40	1,920
1 1/4	1.69	14	28	1,344
1 1/2	1.84	12	24	1,152
2	2.12	8	16	768
2 1/2	2.70	4	8	384
3	3.08	-	6	288
4	3.79	1	2	96

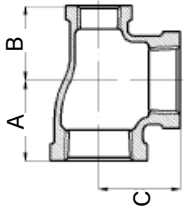
LEAD FREE BRONZE REDUCING TEES - LVBRRT



Size (in)	A (in)	B (in)	Inner Carton	Outer Carton	Pallet
3/8 X 1/4	0.87	0.89	60	240	11,520
1/2 X 1/4	0.85	0.87	40	160	7,680
1/2 X 3/8	0.93	0.90	40	160	7,680
3/4 X 1/4	1.04	1.06	25	100	4,880
3/4 X 3/8	1.08	1.10	25	100	4,880
3/4 X 1/2	1.08	1.11	20	80	3,840
1 X 1/4	1.02	1.14	20	80	3,840
1 X 1/2	1.20	1.24	15	60	2,880
1 X 3/4	1.30	1.31	12	48	2,304
1-1/4 X 1/2	1.29	1.41	20	40	1,920
1-1/4 X 3/4	1.39	1.48	20	40	1,920
1-1/4 X 1	1.52	1.60	20	40	1,920
1-1/2 X 1/2	1.32	1.53	18	36	1,728
1-1/2 X 3/4	1.42	1.60	15	30	1,440
1-1/2 X 1	1.55	1.72	10	30	1,440
1-1/2 X 1-1/4	1.72	1.81	12	24	1,152
2 X 1/2	1.44	1.83	10	20	960
2 X 3/4	1.47	1.81	10	20	960
2 X 1	1.59	1.95	10	20	960
2 X 1-1/4	1.73	2.01	8	16	768
2 X 1-1/2	1.89	2.07	8	16	768
2-1/2 X 1-1/4	2.01	2.44	5	10	480
2-1/2 X 2	2.38	2.60	4	8	384
3 X 2	2.52	2.89	3	6	288

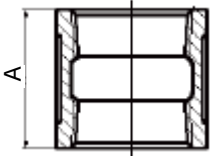
LEAD FREE CAST BRONZE FITTINGS

CLASS 125 lbs.



LEAD FREE BRONZE REDUCING TEES LVBRRT

Size (in)	A (in)	B (in)	C (in)	Inner Carton	Outer Carton	Pallet
1/2 X 1/2 X 3/4	1.11	1.11	1.08	30	120	5,760
3/4 X 1/2 X 1/2	1.08	1.01	1.11	25	100	4,800
3/4 X 1/2 X 3/4	1.18	1.11	1.18	20	80	3,840
3/4 X 3/4 X 1	1.25	1.26	1.28	40	80	3,840
1 X 1/2 X 1/2	1.26	1.40	1.10	20	80	3,840
1 X 1/2 X 3/4	1.36	1.44	1.24	20	80	3,840
1 X 1/2 X 1	1.43	1.24	1.43	15	60	2,880
1 X 3/4 X 3/4	1.30	1.18	1.31	15	60	2,880
1 X 3/4 X 1	1.43	1.31	1.43	30	60	2,880
1-1/4 X 1/2 X 1-1/4	1.64	1.64	1.36	20	40	1,920
1-1/4 X 3/4 X 1-1/4	1.64	1.64	1.44	20	40	1,920
1-1/4 X 1 X 1-1/4	1.64	1.64	1.52	15	30	1,440
1-1/2 X 1-1/4 X 1-1/4	1.66	1.76	1.64	12	24	1,152

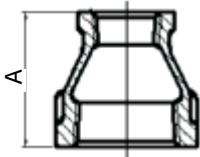


LEAD FREE BRONZE COUPLINGS LVBRCG

Size (in)	A (in)	Inner Carton	Outer Carton	Pallet
1/8	0.80	70	840	40,320
1/4	0.97	40	480	23,040
3/8	1.05	40	480	23,040
1/2	1.29	60	240	11,520
3/4	1.43	50	150	7,200
1	1.68	25	100	4,800
1 1/4	1.86	16	64	3,072
1 1/2	1.92	18	36	1,728
2	2.20	12	24	1,152
2 1/2	2.88	8	16	768
3	3.18	-	12	576
4	3.69	3	6	288

LEAD FREE CAST BRONZE FITTINGS

CLASS 125 lbs.

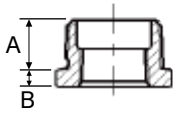


LEAD FREE BRONZE REDUCING COUPLINGS - LVBRRC

Size (in)	A (in)	Inner Carton	Outer Carton	Pallet
1/4 x 1/8	0.88	50	600	28,800
3/8 x 1/8	1.01	35	420	20,160
3/8 x 1/4	1.01	30	360	17,280
1/2 x 1/8	1.13	75	300	14,400
1/2 x 1/4	1.13	75	300	14,400
1/2 x 3/8	1.17	60	240	11,520
3/4 x 1/4	1.24	45	180	8,640
3/4 x 3/8	1.24	45	180	8,640
3/4 x 1/2	1.36	60	180	8,640
1 x 3/8	1.49	30	120	5,760
1 x 1/2	1.49	30	120	5,760
1 x 3/4	1.56	25	100	4,800
1-1/4 x 1/2	1.65	25	75	3,600
1-1/4 x 3/4	1.65	25	75	3,600
1-1/4 x 1	1.77	15	60	2,880
1-1/2 x 1/2	1.80	20	60	2,880
1-1/2 x 3/4	1.80	15	60	2,880
1-1/2 x 1	1.80	25	50	2,400
1-1/2 x 1-1/4	1.89	12	48	2,304
2 X 1/2	2.03	12	36	1,728
2 x 3/4	2.03	12	36	1,728
2 x 1	2.03	12	36	1,728
2 x 1-1/4	2.03	9	27	1,2976
2 x 1-1/2	2.06	9	27	1,2976
2-1/2 x 1-1/4	3.25	10	20	960
2-1/2 x 1-1/2	3.25	7	14	672
2-1/2 x 2	3.25	7	14	672
3 x 2	3.69	6	12	576
3 x 2-1/2	3.66	5	10	480
4 x 2	4.29	3	6	288
4 x 3	4.37	3	6	288

LEAD FREE CAST BRONZE FITTINGS

CLASS 125 lbs.

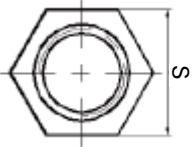
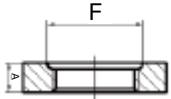


LEAD FREE BRONZE BUSHINGS-LVBRB

Size (in)	A (in)	B (in)	C (in)	Inner Carton	Outer Carton
1/4 x 1/8	0.44	0.14	0.64	25	600
3/8 x 1/8	0.48	0.16	0.68	25	600
3/8 x 1/4	0.48	0.16	0.68	25	600
1/2 x 1/8	0.56	0.19	0.87	25	450
1/2 x 1/4	0.56	0.19	0.87	25	450
1/2 x 3/8	0.56	0.19	0.87	25	450
3/4 x 1/8	0.63	0.22	1.15	25	300
3/4 x 1/4	0.63	0.22	1.15	25	300
3/4 x 3/8	0.63	0.22	1.15	25	300
3/4 x 1/2	0.63	0.22	1.15	25	300
1 x 1/4	0.75	0.30	1.12	25	150
1 x 3/8	0.75	0.30	1.12	25	150
1 x 1/2	0.75	0.25	1.42	25	150
1 x 3/4	0.75	0.25	1.42	25	150
1-1/4 x 1/2	0.80	0.34	1.34	1	120
1-1/4 x 3/4	0.80	0.28	1.76	1	120
1-1/4 x 1	0.80	0.28	1.76	1	120
1-1/2 x 1/4	0.83	0.37	1.16	1	120
1-1/2 x 3/8	0.84	0.35	1.14	1	120
1-1/2 x 1/2	0.83	0.37	1.34	1	120
1-1/2 x 3/4	0.83	0.37	1.62	1	120
1-1/2 x 1	0.83	0.31	2.00	1	100
1-1/2 x 1-1/4	0.83	0.31	2.00	1	100
2 X 1/2	0.88	0.41	1.34	1	90
2 x 3/4	0.88	0.41	1.63	1	90
2 x 1	0.88	0.41	1.95	1	90
2 x 1-1/4	0.88	0.34	2.48	1	80
2 x 1-1/2	0.88	0.34	2.48	1	80
2-1/2 x 1	1.07	0.44	1.95	1	60
2-1/2 x 1-1/4	1.07	0.45	2.42	1	60
2-1/2 x 1-1/2	1.07	0.44	2.68	1	60
2-1/2 x 2	1.07	0.37	2.98	1	60
3 x 1-1/2	1.14	0.49	2.72	1	30
3 x 2	1.13	0.48	3.28	1	30
3 x 2-1/2	1.13	0.40	3.86	1	24
4 x 2	1.22	0.60	3.28	1	24
4 x 2-1/2	1.24	0.61	3.90	1	24
4 x 3	1.22	0.51	4.63	1	24

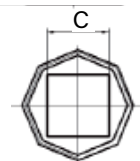
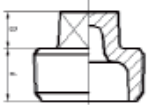
LEAD FREE CAST BRONZE FITTINGS

CLASS 125 lbs.



LEAD FREE BRONZE LOCKNUT LVBRLN

Size (in)	A (in)	F (in)	S (in)	Inner Carton	Outer Carton	Pallet
1/2	0.25	0.66	0.84	150	600	28,800
3/4	0.28	0.77	1.00	90	360	17,280
1	0.31	0.97	1.18	60	240	11,520
1 1/4	0.34	1.23	1.43	45	180	8,640
2	0.38	1.50	1.75	25	75	3,600

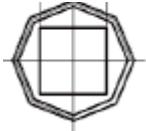
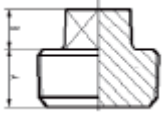


LEAD FREE BRONZE PLUG LVBPRP

Size (in)	A (in)	B (in)	C (in)	Inner Carton	Outer Carton	Pallet
1/8	0.27	0.24	0.28	300	3,600	172,800
1/4	0.41	0.28	0.37	150	1,800	86,400
3/8	0.41	0.31	0.43	100	1,200	57,600
1/2	0.54	0.38	0.56	50	600	28,800
3/4	0.55	0.44	0.62	30	360	17,280
1	0.69	0.50	0.81	20	240	11,520
1 1/4	0.71	0.56	0.94	40	120	5,760
1 1/2	0.73	0.73	1.12	30	90	4,320
2	0.76	0.76	1.31	20	60	2,880
2 1/2	1.07	0.74	1.50	16	32	1,536
3	1.13	0.80	1.69	16	32	1,536
4	1.22	0.92	2.25	6	12	576

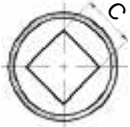
LEAD FREE CAST BRONZE FITTINGS

CLASS 125 lbs.



LEAD FREE BRONZE PLUG SOLID LVBRPS

Size (in)	A (in)	B (in)	C (in)	Inner Carton	Outer Carton	Pallet
1/2	0.54	0.38	0.56	50	600	28,800
3/4	0.55	0.44	0.62	35	420	20,160
1	0.69	0.50	0.81	20	240	11,520
1 1/2	0.73	0.62	1.12	30	90	4,320
2	0.76	0.68	1.31	10	60	2,880



LEAD FREE BRONZE COUNTERSUNK PLUG - LVBRPLC

Size (in)	A (in)	B (in)	C (in)	Inner Carton	Outer Carton	Pallet
1/2	0.54	0.38	0.37	120	1,440	69,120
3/4	0.55	0.44	0.50	70	840	40,320
1	0.69	0.50	0.50	20	240	11,520
1 1/2	0.76	0.68	0.87	30	90	4,320
2	1.13	0.80	1.38	20	60	2,880
3	1.13	0.80	1.38	20	40	1,920

PROJECT	APPROVAL STAMP
PROJECT:	<input type="checkbox"/> APPROVED
ADDRESS:	<input type="checkbox"/> APPROVED AS NOTED
ENGINEER:	<input type="checkbox"/> NOT APPROVED
SUBMITTAL DATA:	REMARKS:
NOTES 1:	
NOTES 2:	