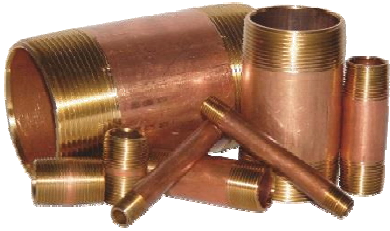


LEAD-FREE BRASS NIPPLES

MODEL LVLFBN

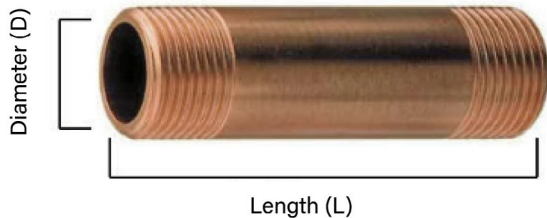


FEATURES:

- Schedule 40
- Lead-Free Brass conforms to ASTM B43; UNS NO. C23000
- Dimensions and ends conform to ASTM A687
- Threads conform to ASME B1.20.1
- Meets NSF/ANSI61, NSF/ANSI372 & CRN

AVAILABILITY:

- Stocked from 1/8" x Close through 4" x 12"
- Redi Cut Nipples are available from 1/2" through 3" diameter up to 60" in length



PRESSURE RATING OF RED BRASS PIPE*				
STANDARD SIZE (In.)	POUNDS PER SQUARE (In.)			
	@100°F	@200°F	@300°F	@400°F
1/8	370	370	320	140
1/4	870	870	760	330
3/8	890	890	780	340
1/2	900	900	790	340
3/4	810	810	710	310
1	630	630	560	240
1-1/4	690	690	610	260
1-1/2	630	630	560	240
2	540	540	480	210
2-1/2	450	450	390	170
3	510	510	450	190
3-1/2	570	570	500	220
4	510	510	440	190
5	410	410	360	160
6	340	340	300	130

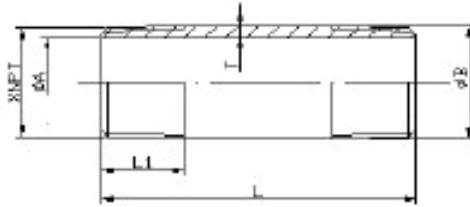
CHEMICAL COMPOSITION OF C23000				
	COPPER	LEAD	ZINC	IRON
MIN.	84	0	0	0
MAX.	86	0.05	remainder	0.05

* Reduce pressure ratings by 15% for threaded pipe or nipples

PROJECT	APPROVAL STAMP
PROJECT:	<input type="checkbox"/> APPROVED
ADDRESS:	<input type="checkbox"/> APPROVED AS NOTED
ENGINEER:	<input type="checkbox"/> NOT APPROVED
SUBMITTAL DATA:	REMARKS:
NOTES 1:	
NOTES 2:	

LEAD-FREE BRASS NIPPLES

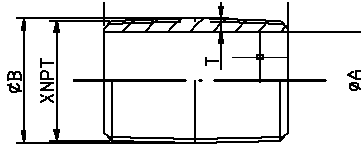
MODEL LVLFBN



DIMENSIONS					
SIZE (In.)	A	B	L	L1	T (MIN.)
3/8 X CLOSE	0.495	0.675	1		0.085
3/8 X 1-1/2	0.495	0.675	1-1/2	0.601	0.085
3/8 X 2	0.495	0.675	2	0.601	0.085
3/8 X 2-1/2	0.495	0.675	2-1/2	0.601	0.085
3/8 X 3	0.495	0.675	3	0.601	0.085
3/8 X 3-1/2	0.495	0.675	3-1/2	0.601	0.085
3/8 X 4	0.495	0.675	4	0.601	0.085
3/8 X 4-1/2	0.495	0.675	4-1/2	0.601	0.085
3/8 X 5	0.495	0.675	5	0.601	0.085
3/8 X 5-1/2	0.495	0.675	5-1/2	0.601	0.085
3/8 X 6	0.495	0.675	6	0.601	0.085
3/8 X 8	0.495	0.675	8	0.601	0.085
3/8 X 10	0.495	0.675	10	0.601	0.085
3/8 X 12	0.495	0.675	12	0.601	0.085
1/2 X CLOSE	0.626	0.84	1-1/8		0.101
1/2 X 1-1/2	0.626	0.84	1-1/2	0.534	0.101
1/2 X 2	0.626	0.84	2	0.781	0.101
1/2 X 2-1/2	0.626	0.84	2-1/2	0.781	0.101
1/2 X 3	0.626	0.84	3	0.781	0.101
1/2 X 3-1/2	0.626	0.84	3-1/2	0.781	0.101
1/2 X 4	0.626	0.84	4	0.781	0.101
1/2 X 4-1/2	0.626	0.84	4-1/2	0.781	0.101
1/2 X 5	0.626	0.84	5	0.781	0.101
1/2 X 5-1/2	0.626	0.84	5-1/2	0.781	0.101
1/2 X 6	0.626	0.84	6	0.781	0.101

LEAD-FREE BRASS NIPPLES

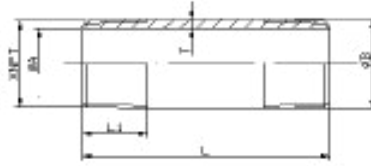
MODEL LVLFBN



DIMENSIONS					
Size (in)	A	B	L	L1	T (Min.)
1/2 X 7	0.626	0.84	7	0.781	0.101
1/2 X 8	0.626	0.84	8	0.781	0.101
1/2 X 9	0.626	0.84	9	0.781	0.101
1/2 X 10	0.626	0.84	10	0.781	0.101
1/2 X 12	0.626	0.84	12	0.781	0.101
1/2 X 18	0.626	0.84	18	0.781	0.101
1/2 X 24	0.626	0.84	24	0.781	0.101
1/2 X 36	0.626	0.84	36	0.781	0.101
1/2 X 48	0.626	0.84	48	0.781	0.101
3/4 X CLOSE	0.822	1.05	1-3/8		0.108
3/4 X 1-1/2	0.822	1.05	1-1/2	0.546	0.108
3/4 X 2	0.822	1.05	2	0.793	0.108
3/4 X 2-1/2	0.822	1.05	2-1/2	0.793	0.108
3/4 X 3	0.822	1.05	3	0.793	0.108
3/4 X 3-1/2	0.822	1.05	3-1/2	0.793	0.108
3/4 X 4	0.822	1.05	4	0.793	0.108
3/4 X 4-1/2	0.822	1.05	4-1/2	0.793	0.108
3/4 X 5	0.822	1.05	5	0.793	0.108
3/4 X 5-1/2	0.822	1.05	5-1/2	0.793	0.108
3/4 X 6	0.822	1.05	6	0.793	0.108
3/4 X 7	0.822	1.05	7	0.793	0.108
3/4 X 8	0.822	1.05	8	0.793	0.108
3/4 X 9	0.822	1.05	9	0.793	0.108
3/4 X 10	0.822	1.05	10	0.793	0.108
3/4 X 12	0.822	1.05	12	0.793	0.108
3/4 X 18	0.822	1.05	18	0.793	0.108
3/4 X 24	0.822	1.05	24	0.793	0.108
3/4 X 30	0.822	1.05	30	0.793	0.108
3/4 X 36	0.822	1.05	36	0.793	0.108
3/4 X 48	0.822	1.05	48	0.793	0.108
3/4 X 60	0.822	1.05	60	0.793	0.108
1 X CLOSE	1.063	1.315	1-1/2		0.119
1 X 2	1.063	1.315	2	0.683	0.119
1 X 2-1/2	1.063	1.315	2-1/2	0.985	0.119
1 X 3	1.063	1.315	3	0.985	0.119
1 X 3-1/2	1.063	1.315	3-1/2	0.985	0.119
1 X 4	1.063	1.315	4	0.985	0.119
1 X 4-1/2	1.063	1.315	4-1/2	0.985	0.119
1 X 5	1.063	1.315	5	0.985	0.119
1 X 5-1/2	1.063	1.315	5-1/2	0.985	0.119

LEAD-FREE BRASS NIPPLES

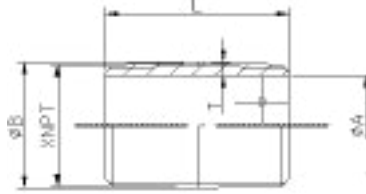
MODEL LVLFBN



DIMENSIONS					
Size (In.)	A	B	L	L1	T (Min.)
1 X 6	1.063	1.315	6	0.985	0.119
1 X 7	1.063	1.315	7	0.985	0.119
1 X 8	1.063	1.315	8	0.985	0.119
1 X 9	1.063	1.315	9	0.985	0.119
1 X 10	1.063	1.315	10	0.985	0.119
1 X 12	1.063	1.315	12	0.985	0.119
1 X 18	1.063	1.315	18	0.985	0.119
1 X 24	1.063	1.315	24	0.985	0.119
1 X 30	1.063	1.315	30	0.985	0.119
1 X 36	1.063	1.315	36	0.985	0.119
1 X 48	1.063	1.315	48	0.985	0.119
1 X 60	1.063	1.315	60	0.985	0.119
1-1/4 X CLOSE	1.368	1.66	1-5/8		0.138
1-1/4 X 2	1.368	1.66	2	0.707	0.138
1-1/4 X 2-1/2	1.368	1.66	2-1/2	1.009	0.138
1-1/4 X 3	1.368	1.66	3	1.009	0.138
1-1/4 X 3-1/2	1.368	1.66	3-1/2	1.009	0.138
1-1/4 X 4	1.368	1.66	4	1.009	0.138
1-1/4 X 4-1/2	1.368	1.66	4-1/2	1.009	0.138
1-1/4 X 5	1.368	1.66	5	1.009	0.138
1-1/4 X 5-1/2	1.368	1.66	5-1/2	1.009	0.138
1-1/4 X 6	1.368	1.66	6	1.009	0.138
1-1/4 X 8	1.368	1.66	8	1.009	0.138
1-1/4 X 9	1.368	1.66	9	1.009	0.138
1-1/4 X 10	1.368	1.66	10	1.009	0.138
1-1/4 X 12	1.368	1.66	12	1.009	0.138
1-1/4 X 18	1.368	1.66	18	1.009	0.138
1-1/4 X 24	1.368	1.66	24	1.009	0.138
1-1/4 X 36	1.368	1.66	36	1.009	0.138
1-1/4 X 48	1.368	1.66	48	1.009	0.138
1-1/4 X 60	1.368	1.66	60	1.009	0.138
1-1/2 X CLOSE	1.6	1.9	1-3/4		0.142
1-1/2 X 2	1.6	1.9	2	0.757	0.142
1-1/2 X 2-1/2	1.6	1.9	2-1/2	1.058	0.142
1-1/2 X 3	1.6	1.9	3	1.058	0.142
1-1/2 X 3-1/2	1.6	1.9	3-1/2	1.058	0.142
1-1/2 X 4	1.6	1.9	4	1.058	0.142
1-1/2 X 4-1/2	1.6	1.9	4-1/2	1.058	0.142
1-1/2 X 5	1.6	1.9	5	1.058	0.142

LEAD-FREE BRASS NIPPLES

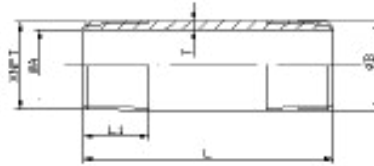
MODEL LVLFBN



DIMENSIONS					
Size (In.)	A	B	L	L1	T (Min.)
1-1/2 X 5-1/2	1.6	1.9	5-1/2	1.058	0.142
1-1/2 X 6	1.6	1.9	6	1.058	0.142
1-1/2 X 8	1.6	1.9	8	1.058	0.142
1-1/2 X 10	1.6	1.9	10	1.058	0.142
1-1/2 X 12	1.6	1.9	12	1.058	0.142
1-1/2 X 18	1.6	1.9	18	1.058	0.142
1-1/2 X 24	1.6	1.9	24	1.058	0.142
1-1/2 X 30	1.6	1.9	30	1.058	0.142
1-1/2 X 36	1.6	1.9	36	1.058	0.142
1-1/2 X 48	1.6	1.9	48	1.058	0.142
1-1/2 X 60	1.6	1.9	60	1.058	0.142
2 X CLOSE	2.063	2.375	2		0.147
2 X 2-1/2	2.063	2.375	2-1/2	1.058	0.147
2 X 3	2.063	2.375	3	1.058	0.147
2 X 3-1/2	2.063	2.375	3-1/2	1.058	0.147
2 X 4	2.063	2.375	4	1.058	0.147
2 X 4-1/2	2.063	2.375	4-1/2	1.058	0.147
2 X 5	2.063	2.375	5	1.058	0.147
2 X 5-1/2	2.063	2.375	5-1/2	1.058	0.147
2 X 6	2.063	2.375	6	1.058	0.147
2 X 7	2.063	2.375	7	1.058	0.147
2 X 8	2.063	2.375	8	1.058	0.147
2 X 9	2.063	2.375	9	1.058	0.147
2 X 10	2.063	2.375	10	1.058	0.147
2 X 12	2.063	2.375	12	1.058	0.147
2 X 18	2.063	2.375	18	1.058	0.147
2 X 24	2.063	2.375	24	1.058	0.147
2 X 30	2.063	2.375	30	1.058	0.147
2 X 36	2.063	2.375	36	1.058	0.147
2 X 48	2.063	2.375	48	1.058	0.147
2 X 60	2.063	2.375	60	1.058	0.147

LEAD-FREE BRASS NIPPLES

MODEL LVLFBN



DIMENSIONS					
Size (In.)	A	B	L	L1	T (Min.)
2-1/2 X CLOSE	2.501	2.875	2-1/2		0.177
2-1/2 X 3	2.501	2.875	3	1.137	0.177
2-1/2 X 3-1/2	2.501	2.875	3-1/2	1.571	0.177
2-1/2 X 4	2.501	2.875	4	1.571	0.177
2-1/2 X 5	2.501	2.875	5	1.571	0.177
2-1/2 X 6	2.501	2.875	6	1.571	0.177
2-1/2 X 8	2.501	2.875	8	1.571	0.177
2-1/2 X 12	2.501	2.875	12	1.571	0.177
2-1/2 X 18	2.501	2.875	18	1.571	0.177
2-1/2 X 24	2.501	2.875	24	1.571	0.177
3 X CLOSE	3.062	3.5	2-5/8		0.207
3 X 3	3.062	3.5	3	1.2	0.207
3 X 3-1/2	3.062	3.5	3-1/2	1.634	0.207
3 X 4	3.062	3.5	4	1.634	0.207
3 X 4-1/2	3.062	3.5	4-1/2	1.634	0.207
3 X 5	3.062	3.5	5	1.634	0.207
3 X 5-1/2	3.062	3.5	5-1/2	1.634	0.207
3 X 6	3.062	3.5	6	1.634	0.207
3 X 7	3.062	3.5	7	1.634	0.207
3 X 8	3.062	3.5	8	1.634	0.207
3 X 10	3.062	3.5	10	1.634	0.207
3 X 12	3.062	3.5	12	1.634	0.207
3 X 24	3.062	3.5	24	1.634	0.207
4 X CLOSE	4	4.5	2-7/8		0.236
4 X 3	4	4.5	3	1.5	0.236
4 X 4	4	4.5	4	1.734	0.236
4 X 5	4	4.5	5	1.734	0.236
4 X 5-1/2	4	4.5	5-1/2	1.734	0.236
4 X 6	4	4.5	6	1.734	0.236
4 X 8	4	4.5	8	1.734	0.236
4 X 12	4	4.5	12	1.734	0.236