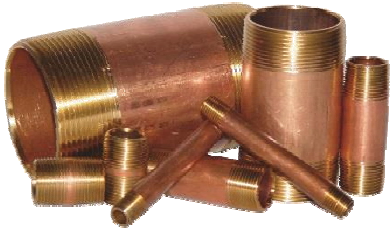


LEAD FREE BRASS NIPPLES

MODEL LVLFBN

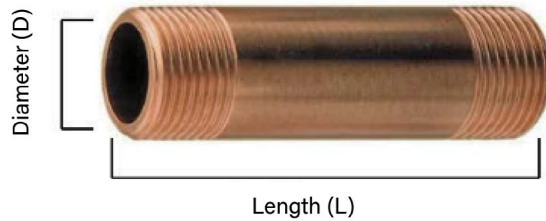


FEATURES:

- Schedule 40
- Lead Free Brass conforms to ASTM B43; UNS NO. C23000
- Dimensions and ends conform to ASTM B687
- Threads conform to ASME B1.20.1
- Meets NSF/ANSI61, NSF/ANSI372 & CRN

AVAILABILITY:

- Stocked from 1/8" x Close through 4" x 12"
- Redi Cut Nipples are available from 1/2" through 3" diameter up to 60" in length

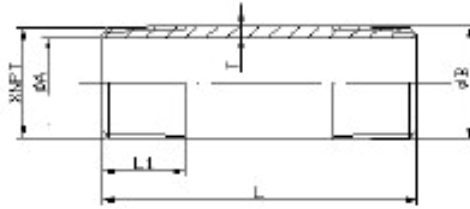


CHEMICAL COMPOSITION OF C23000				
	COPPER	LEAD	ZINC	IRON
MIN	84	0	0	0
MAX	86	0.05	remainder	0.05

PROJECT	APPROVAL STAMP
PROJECT:	<input type="checkbox"/> APPROVED
ADDRESS:	<input type="checkbox"/> APPROVED AS NOTED
ENGINEER:	<input type="checkbox"/> NOT APPROVED
SUBMITTAL DATA:	REMARKS:
NOTES 1:	
NOTES 2:	

LEAD FREE BRASS NIPPLES

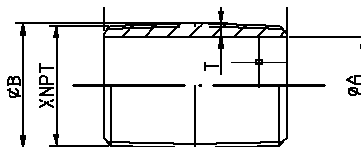
MODEL LVLFBN



DIMENSIONS						
Part #	SIZE (in)	A	B	L	L1	T(MIN.)
550-200-00270	3/8 X CLOSE	0.495	0.675	1		0.085
550-200-00280	3/8 X 1-1/2	0.495	0.675	1-1/2	0.601	0.085
550-200-00290	3/8 X 2	0.495	0.675	2	0.601	0.085
550-200-00300	3/8 X 2-1/2	0.495	0.675	2-1/2	0.601	0.085
550-200-00310	3/8 X 3	0.495	0.675	3	0.601	0.085
550-200-00320	3/8 X 3-1/2	0.495	0.675	3-1/2	0.601	0.085
550-200-00330	3/8 X 4	0.495	0.675	4	0.601	0.085
550-200-00340	3/8 X 4-1/2	0.495	0.675	4-1/2	0.601	0.085
550-200-00350	3/8 X 5	0.495	0.675	5	0.601	0.085
550-200-00360	3/8 X 5-1/2	0.495	0.675	5-1/2	0.601	0.085
550-200-00370	3/8 X 6	0.495	0.675	6	0.601	0.085
550-200-00380	3/8 X 8	0.495	0.675	8	0.601	0.085
550-200-00390	3/8 X 10	0.495	0.675	10	0.601	0.085
550-200-00410	3/8 X 12	0.495	0.675	12	0.601	0.085
550-200-00420	1/2 X CLOSE	0.626	0.84	1-1/8		0.101
550-200-00430	1/2 X 1-1/2	0.626	0.84	1-1/2	0.534	0.101
550-200-00440	1/2 X 2	0.626	0.84	2	0.781	0.101
550-200-00450	1/2 X 2-1/2	0.626	0.84	2-1/2	0.781	0.101
550-200-00460	1/2 X 3	0.626	0.84	3	0.781	0.101
550-200-00470	1/2 X 3-1/2	0.626	0.84	3-1/2	0.781	0.101
550-200-00480	1/2 X 4	0.626	0.84	4	0.781	0.101
550-200-00490	1/2 X 4-1/2	0.626	0.84	4-1/2	0.781	0.101
550-200-00500	1/2 X 5	0.626	0.84	5	0.781	0.101
550-200-00510	1/2 X 5-1/2	0.626	0.84	5-1/2	0.781	0.101
550-200-00520	1/2 X 6	0.626	0.84	6	0.781	0.101

LEAD FREE BRASS NIPPLES

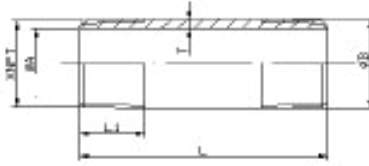
MODEL LVLFBN



DIMENSIONS						
Part #	Size (in)	A	B	L	L1	T(min.)
550-200-00530	1/2 X 7	0.626	0.84	7	0.781	0.101
550-200-00540	1/2 X 8	0.626	0.84	8	0.781	0.101
550-200-00550	1/2 X 9	0.626	0.84	9	0.781	0.101
550-200-00560	1/2 X 10	0.626	0.84	10	0.781	0.101
550-200-00570	1/2 X 12	0.626	0.84	12	0.781	0.101
550-200-01580	1/2 X 18	0.626	0.84	18	0.781	0.101
550-200-01590	1/2 X 24	0.626	0.84	24	0.781	0.101
550-200-01610	1/2 X 36	0.626	0.84	36	0.781	0.101
550-200-01620	1/2 X 48	0.626	0.84	48	0.781	0.101
550-200-00580	3/4 X CLOSE	0.822	1.05	1-3/8		0.108
550-200-00590	3/4 X 1-1/2	0.822	1.05	1-1/2	0.546	0.108
550-200-00600	3/4 X 2	0.822	1.05	2	0.793	0.108
550-200-00610	3/4 X 2-1/2	0.822	1.05	2-1/2	0.793	0.108
550-200-00620	3/4 X 3	0.822	1.05	3	0.793	0.108
550-200-00630	3/4 X 3-1/2	0.822	1.05	3-1/2	0.793	0.108
550-200-00640	3/4 X 4	0.822	1.05	4	0.793	0.108
550-200-00650	3/4 X 4-1/2	0.822	1.05	4-1/2	0.793	0.108
550-200-00660	3/4 X 5	0.822	1.05	5	0.793	0.108
550-200-00670	3/4 X 5-1/2	0.822	1.05	5-1/2	0.793	0.108
550-200-00680	3/4 X 6	0.822	1.05	6	0.793	0.108
550-200-00690	3/4 X 7	0.822	1.05	7	0.793	0.108
550-200-00700	3/4 X 8	0.822	1.05	8	0.793	0.108
550-200-00710	3/4 X 9	0.822	1.05	9	0.793	0.108
550-200-00720	3/4 X 10	0.822	1.05	10	0.793	0.108
550-200-00730	3/4 X 12	0.822	1.05	12	0.793	0.108
550-200-01640	3/4 X 18	0.822	1.05	18	0.793	0.108
550-200-01650	3/4 X 24	0.822	1.05	24	0.793	0.108
550-200-01660	3/4 X 30	0.822	1.05	30	0.793	0.108
550-200-01670	3/4 X 36	0.822	1.05	36	0.793	0.108
550-200-01680	3/4 X 48	0.822	1.05	48	0.793	0.108
550-200-01690	3/4 X 60	0.822	1.05	60	0.793	0.108
550-200-00740	1 X CLOSE	1.063	1.315	1-1/2		0.119
550-200-00750	1 X 2	1.063	1.315	2	0.683	0.119
550-200-00760	1 X 2-1/2	1.063	1.315	2-1/2	0.985	0.119
550-200-00770	1 X 3	1.063	1.315	3	0.985	0.119
550-200-00780	1 X 3-1/2	1.063	1.315	3-1/2	0.985	0.119
550-200-00790	1 X 4	1.063	1.315	4	0.985	0.119
550-200-00800	1 X 4-1/2	1.063	1.315	4-1/2	0.985	0.119
550-200-00810	1 X 5	1.063	1.315	5	0.985	0.119
550-200-00820	1 X 5-1/2	1.063	1.315	5-1/2	0.985	0.119

LEAD FREE BRASS NIPPLES

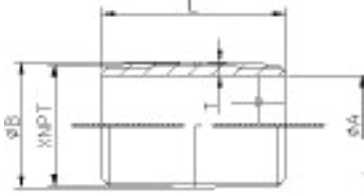
MODEL LVLFBN



DIMENSIONS						
Part #	Size (in)	A	B	L	L1	T(min.)
550-200-00830	1 X 6	1.063	1.315	6	0.985	0.119
550-200-00840	1 X 7	1.063	1.315	7	0.985	0.119
550-200-00850	1 X 8	1.063	1.315	8	0.985	0.119
550-200-00860	1 X 9	1.063	1.315	9	0.985	0.119
550-200-00870	1 X 10	1.063	1.315	10	0.985	0.119
550-200-00880	1 X 12	1.063	1.315	12	0.985	0.119
550-200-01700	1 X 18	1.063	1.315	18	0.985	0.119
550-200-01710	1 X 24	1.063	1.315	24	0.985	0.119
550-200-01720	1 X 30	1.063	1.315	30	0.985	0.119
550-200-01730	1 X 36	1.063	1.315	36	0.985	0.119
550-200-01740	1 X 48	1.063	1.315	48	0.985	0.119
550-200-01750	1 X 60	1.063	1.315	60	0.985	0.119
550-200-00890	1-1/4 X CLOSE	1.368	1.66	1-5/8		0.138
550-200-00900	1-1/4 X 2	1.368	1.66	2	0.707	0.138
550-200-00910	1-1/4 X 2-1/2	1.368	1.66	2-1/2	1.009	0.138
550-200-00920	1-1/4 X 3	1.368	1.66	3	1.009	0.138
550-200-00930	1-1/4 X 3-1/2	1.368	1.66	3-1/2	1.009	0.138
550-200-00940	1-1/4 X 4	1.368	1.66	4	1.009	0.138
550-200-00950	1-1/4 X 4-1/2	1.368	1.66	4-1/2	1.009	0.138
550-200-00960	1-1/4 X 5	1.368	1.66	5	1.009	0.138
550-200-00970	1-1/4 X 5-1/2	1.368	1.66	5-1/2	1.009	0.138
550-200-00980	1-1/4 X 6	1.368	1.66	6	1.009	0.138
550-200-00990	1-1/4 X 8	1.368	1.66	8	1.009	0.138
550-200-01000	1-1/4 X 9	1.368	1.66	9	1.009	0.138
550-200-01010	1-1/4 X 10	1.368	1.66	10	1.009	0.138
550-200-01020	1-1/4 X 12	1.368	1.66	12	1.009	0.138
550-200-01760	1-1/4 X 18	1.368	1.66	18	1.009	0.138
550-200-01770	1-1/4 X 24	1.368	1.66	24	1.009	0.138
550-200-01790	1-1/4 X 36	1.368	1.66	36	1.009	0.138
550-200-01800	1-1/4 X 48	1.368	1.66	48	1.009	0.138
550-200-01810	1-1/4 X 60	1.368	1.66	60	1.009	0.138
550-200-01030	1-1/2 X CLOSE	1.6	1.9	1-3/4		0.142
550-200-01040	1-1/2 X 2	1.6	1.9	2	0.757	0.142
550-200-01050	1-1/2 X 2-1/2	1.6	1.9	2-1/2	1.058	0.142
550-200-01060	1-1/2 X 3	1.6	1.9	3	1.058	0.142
550-200-01070	1-1/2 X 3-1/2	1.6	1.9	3-1/2	1.058	0.142
550-200-01080	1-1/2 X 4	1.6	1.9	4	1.058	0.142
550-200-01090	1-1/2 X 4-1/2	1.6	1.9	4-1/2	1.058	0.142
550-200-01100	1-1/2 X 5	1.6	1.9	5	1.058	0.142

LEAD FREE BRASS NIPPLES

MODEL LVLFBN



DIMENSIONS						
Part #	Size (in)	A	B	L	L1	T(min.)
550-200-01110	1-1/2 X 5-1/2	1.6	1.9	5-1/2	1.058	0.142
550-200-01120	1-1/2 X 6	1.6	1.9	6	1.058	0.142
550-200-01130	1-1/2 X 8	1.6	1.9	8	1.058	0.142
550-200-01140	1-1/2 X 10	1.6	1.9	10	1.058	0.142
550-200-01150	1-1/2 X 12	1.6	1.9	12	1.058	0.142
550-200-01820	1-1/2 X 18	1.6	1.9	18	1.058	0.142
550-200-01830	1-1/2 X 24	1.6	1.9	24	1.058	0.142
550-200-01840	1-1/2 X 30	1.6	1.9	30	1.058	0.142
550-200-01850	1-1/2 X 36	1.6	1.9	36	1.058	0.142
550-200-01860	1-1/2 X 48	1.6	1.9	48	1.058	0.142
550-200-01870	1-1/2 X 60	1.6	1.9	60	1.058	0.142
550-200-01160	2 X CLOSE	2.063	2.375	2		0.147
550-200-01170	2 X 2-1/2	2.063	2.375	2-1/2	1.058	0.147
550-200-01180	2 X 3	2.063	2.375	3	1.058	0.147
550-200-01190	2 X 3-1/2	2.063	2.375	3-1/2	1.058	0.147
550-200-01200	2 X 4	2.063	2.375	4	1.058	0.147
550-200-01210	2 X 4-1/2	2.063	2.375	4-1/2	1.058	0.147
550-200-01220	2 X 5	2.063	2.375	5	1.058	0.147
550-200-01230	2 X 5-1/2	2.063	2.375	5-1/2	1.058	0.147
550-200-01240	2 X 6	2.063	2.375	6	1.058	0.147
550-200-01250	2 X 7	2.063	2.375	7	1.058	0.147
550-200-01260	2 X 8	2.063	2.375	8	1.058	0.147
550-200-01270	2 X 9	2.063	2.375	9	1.058	0.147
550-200-01280	2 X 10	2.063	2.375	10	1.058	0.147
550-200-01290	2 X 12	2.063	2.375	12	1.058	0.147
550-200-01880	2 X 18	2.063	2.375	18	1.058	0.147
550-200-01890	2 X 24	2.063	2.375	24	1.058	0.147
550-200-01900	2 X 30	2.063	2.375	30	1.058	0.147
550-200-01910	2 X 36	2.063	2.375	36	1.058	0.147
550-200-01920	2 X 48	2.063	2.375	48	1.058	0.147
550-200-01930	2 X 60	2.063	2.375	60	1.058	0.147

LEAD FREE BRASS NIPPLES

MODEL LVLFBN



DIMENSIONS						
Part #	Size (in)	A	B	L	L1	T(min.)
550-200-01300	2-1/2 X CLOSE	2.501	2.875	2-1/2		0.177
550-200-01310	2-1/2 X 3	2.501	2.875	3	1.137	0.177
550-200-01320	2-1/2 X 3-1/2	2.501	2.875	3-1/2	1.571	0.177
550-200-01330	2-1/2 X 4	2.501	2.875	4	1.571	0.177
550-200-01340	2-1/2 X 5	2.501	2.875	5	1.571	0.177
550-200-01350	2-1/2 X 6	2.501	2.875	6	1.571	0.177
550-200-01360	2-1/2 X 8	2.501	2.875	8	1.571	0.177
550-200-01370	2-1/2 X 12	2.501	2.875	12	1.571	0.177
550-200-01940	2-1/2 X 18	2.501	2.875	18	1.571	0.177
550-200-01950	2-1/2 X 24	2.501	2.875	24	1.571	0.177
550-200-01380	3 X CLOSE	3.062	3.5	2-5/8		0.207
550-200-01390	3 X 3	3.062	3.5	3	1.2	0.207
550-200-01400	3 X 3-1/2	3.062	3.5	3-1/2	1.634	0.207
550-200-01410	3 X 4	3.062	3.5	4	1.634	0.207
550-200-01420	3 X 4-1/2	3.062	3.5	4-1/2	1.634	0.207
550-200-01430	3 X 5	3.062	3.5	5	1.634	0.207
550-200-01440	3 X 5-1/2	3.062	3.5	5-1/2	1.634	0.207
550-200-01450	3 X 6	3.062	3.5	6	1.634	0.207
550-200-01460	3 X 7	3.062	3.5	7	1.634	0.207
550-200-01470	3 X 8	3.062	3.5	8	1.634	0.207
550-200-01480	3 X 10	3.062	3.5	10	1.634	0.207
550-200-01490	3 X 12	3.062	3.5	12	1.634	0.207
550-200-01970	3 X 24	3.062	3.5	24	1.634	0.207
550-200-01500	4 X CLOSE	4	4.5	2-7/8		0.236
550-200-01510	4 X 3	4	4.5	3	1.5	0.236
550-200-01520	4 X 4	4	4.5	4	1.734	0.236
550-200-01530	4 X 5	4	4.5	5	1.734	0.236
550-200-01540	4 X 5-1/2	4	4.5	5-1/2	1.734	0.236
550-200-01550	4 X 6	4	4.5	6	1.734	0.236
550-200-01560	4 X 8	4	4.5	8	1.734	0.236
550-200-01570	4 X 12	4	4.5	12	1.734	0.236