

Silent Check Valve Bronze Seat & Stainless Steel Seat

FIG. LV5104
FIG. LV5105

Specifications

- The design is for liquid service and offers many obvious advantages when compared with conventional swing check valve
- Spring automatically closes disc at zero flow before flow reversal occurs. This prevents surge and water hammer
- Completely guided disc both top and bottom
- Perfect tightness soft sealed even at low differential pressure
- Flanged and drilling complies with EN1092-2 PN10/16; ANSI B 16.1 Class 125

Working Pressure and Temperature

- 16 bar / 250 psi rated at -10°C to 120°C for EPDM seat
- 16 bar / 250 psi rated at -10°C to 82°C for NBR seat

Corrosion Protection

- Fusion bonded coating interior and exterior

Options

- PN25 / 300 psi available
- Ductile Iron body

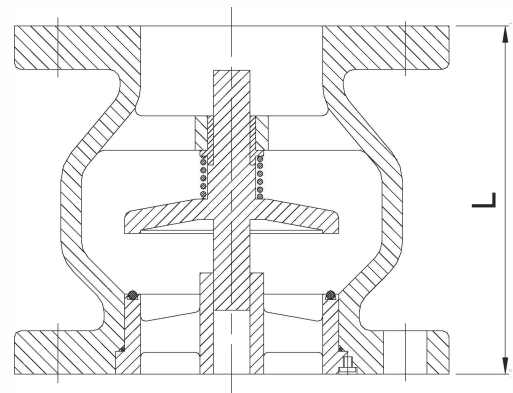
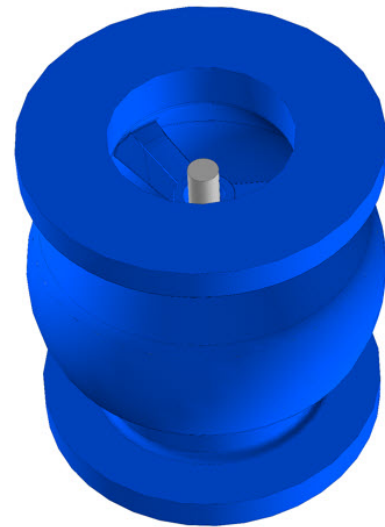
Material Specifications

Part	Material	EN Specification	ASTM Specification
Body	Cast Iron	EN 1561, EN-GJL-250	A126 Class B
Seat	Stainless Steel	EN 10213, GX5CrNi19-10	A351 Grade CF8
	Bronze	EN 1982, CC491K	B62 C83600
Disc	Stainless Steel	EN 10213, GX5CrNi19-10	A351 Grade CF8
	Bronze	EN 1982, CC491K	B62 C83600
Spring	Stainless Steel	EN 10088-3, X5CrNi18-10	A276 Grade 304
Bushing	Bronze	EN 1982, CC491K	B62 C83600
Seat O-ring	Rubber	EN 681, EPDM/NBR	D2000, EPDM/NBR

Main Dimensions

Size	DN50	DN65	DN80	DN100	DN125	DN150	DN200	DN250	DN300	DN350	DN400
L	133	140	152	185	216	248	318	393	362	400	446

Schematic



Notes

- Designs, materials and specifications shown are subject to change without notice due to the continuous development of our products.