

KNURLED EXTENSION COUPLINGS

MODEL LVKNBEXT



DESCRIPTION:

The Lansdale Model LVKNBEXT Brass Extension Nipples are fabricated from a solid brass bar. It has a knurled outer diameter for ease of installation, and comes in various sizes from 1/2" x 1/2" thru 3/4" x 1". These nipples have been designed to be used as a sprinkler head extension, when there is a need to meet a critical dimension without removing, re-cutting and replacing the drop nipple, thereby saving a significant amount of time and cutting costs during installation of the system. While the NFPA allows the use of this product, check with your local AHJ before utilizing this product in your fire sprinkler system.

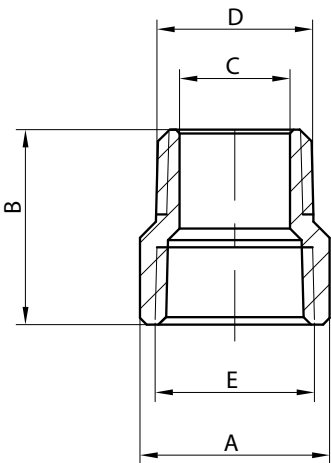
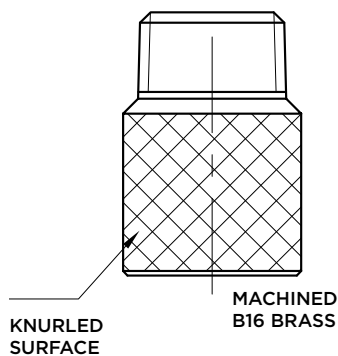
FEATURES:

- Material: Machined B16 Brass
- Surface treatment: Acid treatment
- NPT threads

INSTALLATION:

This item should be installed using standard industry practices. Make sure that all threads are clean and free of any burrs, a quality thread sealant, such as Lansdale's Lans Seal or PTFE Pipe thread tape should be used on the male threads; NEVER USE BOTH. Thread the nipple onto the reducing coupling by hand and then tighten about one additional turn with some type of pliers, while holding back the reducer. Install the sprinkler head to the nipple, by hand and then continue the tightening process with the appropriate sprinkler wrench while holding back on the reducer.

*** DO NOT EXCEED 15 FT LBS of TORQUE; OVERTIGHTENING WILL CAUSE THE BRASS EXTENSION to FAIL.**



KNURL EXTENSION COUPLINGS						
SIZE (In.)	A	B	C	D	E	WT. (Lbs.)
1/2x 1/2	1.0	1.30	.60	1/2"-14NPT	1/2"-14NPT	.11
1/2 x 3/4	1.0	1.27	.60	1/2"-14NPT	1/2"-14NPT	.12
1/2 x 1	1.0	1.27	.60	1/2"-14NPT	1/2"-14NPT	.24
1/2 x 1-1/2	1.0	1.27	.60	1/2"-14NPT	1/2"-14NPT	.32
1/2 x 2	1.0	1.27	.60	1/2"-14NPT	1/2"-14NPT	.12
3/4 x 1/2	1.22	1.22	.75	3/4"-14NPT	3/4"-14NPT	.15
3/4 x 3/4	1.22	1.22	.75	3/4"-14NPT	3/4"-14NPT	.15
3/4 x 1	1.22	1.22	.75	3/4"-14NPT	3/4"-14NPT	.21

Note: This product is covered by additional disclaimers regarding the suitability and use. Purchaser and installer take full responsibility for the use of this product and Lansdale will not accept any liability for the failure of this product or damage caused by it.

PROJECT	APPROVAL STAMP
PROJECT:	<input type="checkbox"/> APPROVED
ADDRESS:	<input type="checkbox"/> APPROVED AS NOTED
ENGINEER:	<input type="checkbox"/> NOT APPROVED
SUBMITTAL DATA:	REMARKS:
NOTES 1:	
NOTES 2:	