

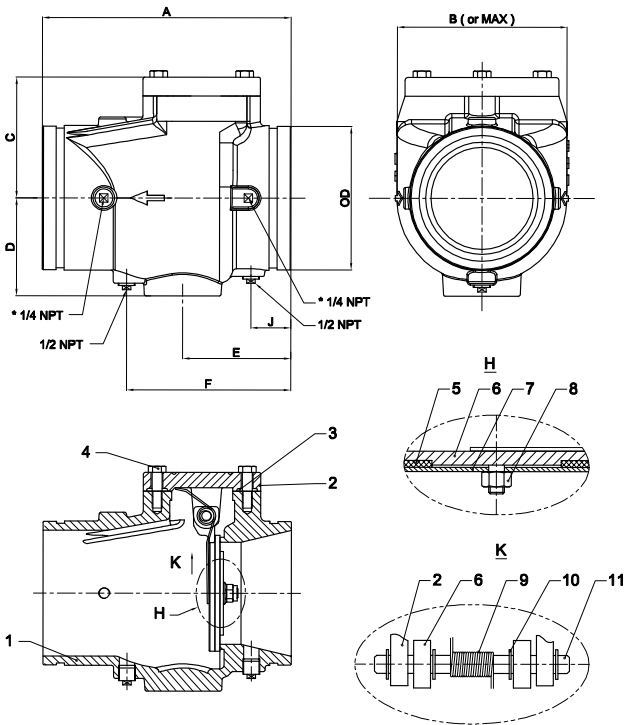
GROOVED END CHECK VALVE with INSPECTION COVER

MODEL LVCVGG-RF



FEATURES:

- Grooved connections are cut in accordance with AWWA C606
- Maximum Working Pressure: 300 PSI
- Removable inspection cover
- Spring assisted clapper



Red Enamel - RAL 3000 NSF-61

MATERIAL SPECIFICATION			
PART NO.	PART	MATERIAL	ASTM SPECIFICATION
1	Body	Ductile Iron	ASTM A536 Gr. 65-45-12
2	Cover	Ductile Iron	ASTM A536 Gr. 65-45-12
3	Cover Gasket	Rubber	D2000 EPDM
4	Bolts & Washers	Carbon Steel	ASTM A307 Gr.B
5	Clapper Facing	Rubber	D2000 EPDM
6	Clapper 2" - 8"	Stainless Steel	ASTM A276 Gr. 304
	Clapper 10" - 12"	Ductile Iron	ASTM A536 Gr. 65-45-12
7	Retaining Disc	Stainless Steel	ASTM A276 Gr. 304
8	Locknut	Stainless Steel	ASTM A276 Gr. 304
9	Spring	Stainless Steel	ASTM A276 Gr. 304
10	Retaining Ring	Stainless Steel	ASTM A276 Gr. 304
11	Hinge Shaft	Stainless Steel	ASTM A276 Gr. 304

NOMINAL PIPE SIZE		NOMINAL DIMENSIONS						
VALVE SIZE (IN)	PIPE O.D./ (IN)	A	B	C	D	E	F	J
2	2.38	6.75	4.10	2.48	2.17	3.27	4.76	1.63
2-1/2	2.88	8.00	4.57	2.76	2.76	3.86	5.87	1.65
3	3.50	8.37	5.35	3.11	3.15	3.86	5.87	1.65
4	4.50	9.63	6.30	3.98	3.62	4.53	7.13	1.81
5	5.56	10.50	7.40	4.46	4.13	4.90	7.50	1.75
6	6.63	11.50	7.87	5.59	4.53	5.00	7.60	1.85
8	8.63	14.00	9.92	6.85	5.51	5.43	8.46	2.13
10	10.75	18.00	12.38	8.62	6.41	7.50	10.50	3.00
12	12.75	21.00	14.28	9.93	7.27	7.62	10.62	2.75

PROJECT	APPROVAL STAMP
PROJECT:	<input type="checkbox"/> APPROVED
ADDRESS:	<input type="checkbox"/> APPROVED AS NOTED
ENGINEER:	<input type="checkbox"/> NOT APPROVED
SUBMITTAL DATA:	REMARKS:
NOTES 1:	
NOTES 2:	