

DUCTILE COMPANION FLANGES

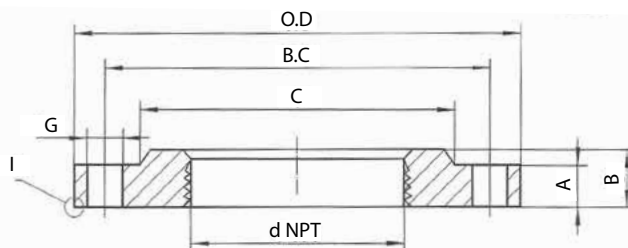
Models LVDICF & LVDIRCF



FEATURES:

- Available in Black
- Cast Iron Conforms to ASTM A 126 & ASTM A48
- ANSI Class 125 Flanges
- Meets ASME B16.1 Standard /C110/A21.10
- Common Sizes- 1½" -12"
- Reducing Sizes: 3"x 2" - 8"x 6"

Applications: Waterworks, Fire Protection, Pump & Well, Plumbing and Irrigations



Companion Flange Model - LVDICF

SIZE (IN)	SIZE x OD (IN)	A (min)	B	C	B.C	G	Number of Bolts
1½	1½ x 5	0.56	0.9	2.56	3.88	0.62	4
2	2 x 6	0.62	1.0	3.06	4.75	0.75	4
2½	2½ x 7	0.69	1.1	3.56	5.50	0.75	4
3	3 x 7½	0.75	1.2	4.25	6.00	0.75	4
4	4 x 9	0.94	1.3	5.31	7.50	0.75	4
5	5 x 10	0.94	1.4	6.44	8.50	0.88	4
6	6 x 11	1.00	1.6	7.56	9.50	0.88	4
8	8 x 13½	1.12	1.8	9.69	11.80	0.88	4
10	10 x 16	1.19	1.9	11.90	14.30	1.00	4
12	12 x 19	1.25	2.2	14.10	17.00	1.00	4

Reducing Companion Flange Model - LVDIRCF

SIZE (IN)	SIZE x OD (IN)	A (min)	B	C	B.C	G	Number of Bolts
3 x 2	2 x 7½	0.69	1.00	3.06	6.00	0.75	4
3 x 2½	2½ x 7½	0.75	1.10	3.56	6.00	0.75	4
4 x 2	2 x 9	0.94	1.10	3.06	7.50	0.75	8
4 x 2½	2½ x 9	0.94	1.10	3.56	7.50	0.75	8
4 x 3	3 x 9	0.94	1.19	4.25	7.50	0.75	8
5 x 2½	2½ x 10	0.94	1.10	3.56	8.50	0.88	8
5 x 4	4 x 10	0.94	1.31	5.31	8.50	0.88	8
6 x 2	2 x 11	1.00	1.00	3.06	9.50	0.88	8
6 x 2½	2½ x 11	1.00	1.10	3.56	9.50	0.88	8
6 x 3	3 x 11	1.00	1.19	4.25	9.50	0.88	8
6 x 4	4 x 11	1.00	1.31	5.31	9.50	0.88	8
6 x 5	5 x 11	1.00	1.44	6.44	9.50	0.88	8
8 x 2	2 x 13½	1.12	1.12	3.06	11.75	0.88	8
8 x 2½	2½ x 13½	1.12	1.12	3.56	11.75	0.88	8
8 x 3	3 x 13½	1.12	1.19	4.25	11.75	0.88	8
8 x 4	4 x 13½	1.12	1.31	5.31	11.75	0.88	8
8 x 5	5 x 13½	1.12	1.44	6.44	11.75	0.88	8
8 x 6	6 x 13½	1.12	1.56	7.56	11.75	0.88	8

PROJECT		APPROVAL STAMP
PROJECT:		
ADDRESS:		
ENGINEER:		
SUBMITTAL DATA:		REMARKS:
NOTES 1:		
NOTES 2:		