

# COMMERCIAL RISER ASSEMBLY

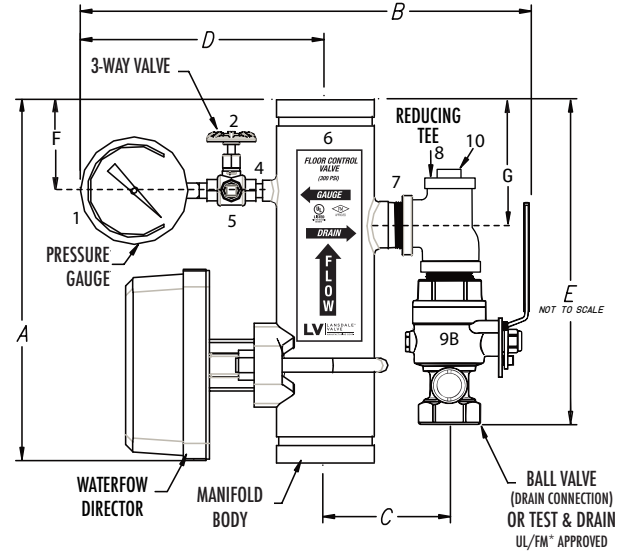
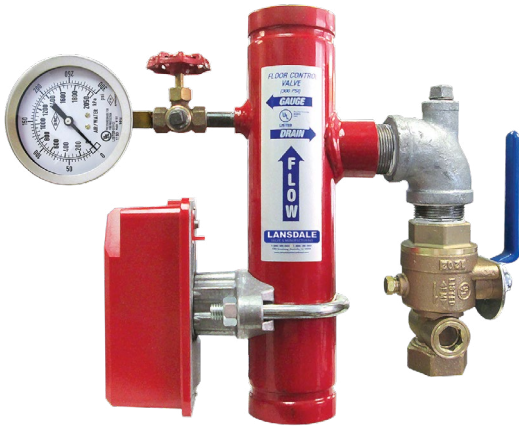
LVCRBV - WITH BALL VALVE

LVCRTD - WITH TEST & DRAIN



## FEATURES:

- Test and drain with optional PRV, available nominal K-Factor: 2.8, 4.2, 5.6, 8.0, 11.2, 14.0 (available on 1-1/4" - 2" size units only), and 25.2 (available on 1-1/2" and 2" size units only)



BODY SIZE	1½"	2"	2½"	3"	4"	5"	6"	8"
<b>BALL VALVE SIZE</b> Model LVCRBV	1"	1"	1¼"	1¼"	2"	2"	2"	2"
<b>TEST &amp; DRAIN SIZE</b> Model LVCRTD	1"	1"	1¼"	1¼"	2"	2"	2"	2"

NOMINAL SIZE	1½"	2"	2½"	3"	4"	5"	6"	8"
<b>A</b>	13"	13"	13"	13"	13"	13"	13"	13"
<b>B (BALL VALVE)</b>	7⅞"	13"	13¾"	15¾"	19½"	20⅝"	20"	22¾"
<b>B (TEST &amp; DRAIN)</b>	13¾"	13½"	14¼"	16¼"	19"	20⅝"	20¾"	23½"
<b>C</b>	4"	5¼"	5"	5½"	7"	7½"	8¼"	9¼"
<b>D</b>	9⅞"	9¼"	9½"	9½"	10⅝"	10⅞"	11"	12"
<b>E (BALL VALVE)</b>	9½"	5⅝"	7⅞"	9⅞"	12⅞"	13½"	13½"	12⅞"
<b>E (TEST &amp; DRAIN)</b>	11½"	10"	10¼"	12¼"	14¾"	14½"	14½"	14⅝"
<b>F</b>	3⅞"	3½"	3½"	3½"	3½"	3½"	3½"	3½"
<b>G</b>	4½"	4½"	4½"	4½"	4½"	4½"	4½"	4½"
<b>H</b>	3½"	3½"	3½"	3½"	3½"	3½"	3½"	3½"

NO.	DESCRIPTION	QTY.
1	Lansdale Air/Water 3-1/2" Dia. 0-300 PSI UL/FM Approved	1
2	1/4" 3-Way Valve	1
3	Water Flow Switch with retard UL/FM Approved	1
4	1/4" x 2 Black Nipple	1
5	1/4" Black CI Plug	1
6	Commercial Riser Body Sch 40 A53 steel pipe	1
7	Black Nipple 1" x Close	1
8	Galvanized Reducing Tee	1
9A	Ball Valve 300 PSI, 600 WOG UL/FM Approved	1
9B	Lansdale Valve & Manufacturing or equal Test & Drain UL/FM Approved	1
10	Galvanized Plug	1

**\*\*NOTE:** All tolerances (with exception of the grooves) plus or minus ¼ of an inch. All welds to be ¼" fillet surface prep of body-SSPC-SP-7 finished with 2.5 mils., Bengal Red TGIC/Acrylic epoxy powder coat, electro statically applied.

**\*\*NOTE:** Standard Test & Drain orifice 5.6K, optional orifice's available upon request: 4.2K, 14.0K, 25.2K

PROJECT	APPROVAL STAMP
PROJECT:	<input type="checkbox"/> APPROVED
ADDRESS:	<input type="checkbox"/> APPROVED AS NOTED
ENGINEER:	<input type="checkbox"/> NOT APPROVED
SUBMITTAL DATA:	REMARKS:
NOTES 1:	
NOTES 2:	