

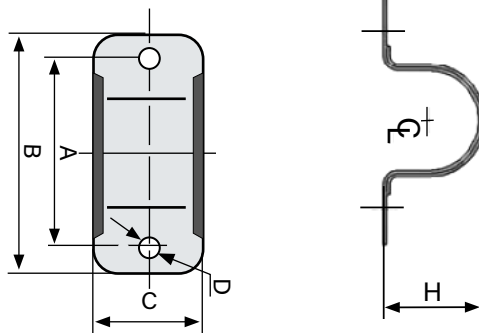
# CPVC 2-HOLE STRAP

MODEL LVH770



## FEATURES:

Designed for support of restraint for piping in either a vertical or horizontal position. It can be used on top or bottom of a beam. The edges are flared to prevent any damage to the CPVC pipe. It is easily attached using 2 hex head self-threading screws.



Pipe Size	A (In)	B (In)	C (In)	D (In)	H (In)	Approx. Wt. (Lbs.)
3/4	1.97	2.76	1.10	0.28	1.10	0.11
1	2.52	3.23	1.10	0.28	1.50	0.11
1 1/4	2.60	3.35	1.10	0.28	1.69	0.13
1 1/2	3.15	3.86	1.10	0.28	2.13	0.13
2	3.62	4.29	1.10	0.28	2.56	0.15

PROJECT	APPROVAL STAMP
PROJECT:	<input type="checkbox"/> APPROVED
ADDRESS:	<input type="checkbox"/> APPROVED AS NOTED
ENGINEER:	<input type="checkbox"/> NOT APPROVED
SUBMITTAL DATA:	REMARKS:
NOTES 1:	
NOTES 2:	