

# CPVC 1-HOLE STRAP

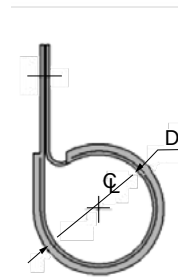
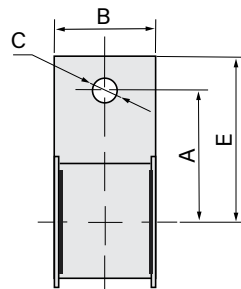
MODEL LVH769



## FEATURES:

Provides support for CPVC or Polybutalene Fire Sprinkler Piping Systems shall be installed per NFPA 13, 13R and 13D.

- Pre-galvanized finish



Designed to mount CPVC pipe to wood or composite wood joints with a minimum 3/8" thickness, galvanized steel, beveled edge design.

Pipe Size	A (In)	B (In)	C (In)	D (In)	E (In)	Approx. Wt. (Lbs.)
3/4	1.42	1.10	0.28	1.18	1.77	0.15
1	1.77	1.10	0.28	1.46	2.17	0.15
1 1/4	1.77	1.10	0.28	1.81	2.17	0.18
1 1/2	1.89	1.10	0.28	2.05	2.28	0.18
2	1.97	1.10	0.28	2.52	2.36	0.20

PROJECT	APPROVAL STAMP
PROJECT:	<input type="checkbox"/> APPROVED
ADDRESS:	<input type="checkbox"/> APPROVED AS NOTED
ENGINEER:	<input type="checkbox"/> NOT APPROVED
SUBMITTAL DATA:	REMARKS:
NOTES 1:	
NOTES 2:	