

# C

## C-AIRE<sup>®</sup>

### COMPRESSORS

## S261R-LD1-115PD

**EASY TO INSTALL**  
**SET PRESSURE IN SECONDS**  
**WHISPER QUIET - 60 dB**  
**FOR USE WITHOUT AN AIR**  
**MAINTENANCE DEVICE—**  
**SAVING TIME & MONEY!**

- SET PRESSURE IN SECONDS
- IDEAL FOR QUIET SETTINGS
  - Nursing Homes
  - Apartments
  - Churches
- INCLUDES MOUNTING BRACKET AND 30" STEEL BRAIDED FLEX HOSE



- MOUNTS TO RISERS 2.5" AND LARGER

#### SYSTEM CAPACITY

PSI	SYSTEM CAPACITY IN GALLONS
8	1,767
10	1,386
12	1,130
14	951
16	818
18	715
20	633
22	569
24	515
26	469
28	430
30	396
32	367
34	341
36	318
38	298
40	280

#### SPECS:

HP	1
SYSTEM CAPACITY	40 PSI 280 GALLONS
	20 PSI 633 GALLONS
	10 PSI 1,386 GALLONS
PRESSURE SWITCH	ADJUSTABLE: 5-55psi FACTORY SET AT 10-20PSI MINIMUM DIFFERENTIAL: 5PSI
CFM	3.80 @10PSI
PUMP	2 CYLINDER, OIL FREE
CYLINDERS	CERAMIC COMPOSITE
VOLTS	115
PHASE	1
RUNNING AMPS	7.5
BREAKER SIZE	15 AMP RECOMMENDED
OUTLET	3/4" NPT
DIMENSIONS	27"x10.5"x7"
WEIGHT	38.0 LBS.



PATENT PENDING

Listings:

Pressure Switch:

CSA listed to UL 508 Standard (USA)

CSA listed to C22.2 No. 14 Standard (Canada)

Compressor:

CSA listed to UL 1450 - 3rd Edition Standard (USA)

CSA listed to C22.2 No. 68-92 Standard (Canada)

*'C' The Advantage*

380 WEST 1ST STREET, DRESSER, WI 54009

800.762.2247 // 651.462.3440 // WWW.C-AIREINC.COM

# EASY TO INSTALL

## INSTALL ON RISER, OR DRYWALL, CINDER BLOCK AND CONCRETE WALLS

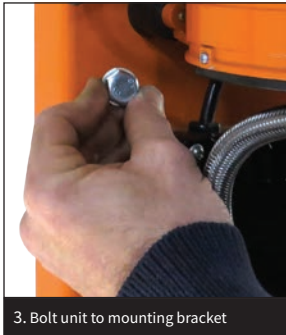
### MOUNT TO RISER



1. Install mounting bracket on riser



2. Hang unit on mounting bracket



3. Bolt unit to mounting bracket



4. Install air filter assembly

### MOUNT TO DRYWALL



1. Attach 2x4s to studs in drywall



2. Attach mounting bracket to wall



3. Hang unit onto the mounting bracket



4. Slip bolt through unit to mounting bracket

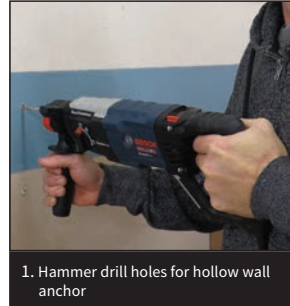


5. Tighten bolt to unit and mounting bracket

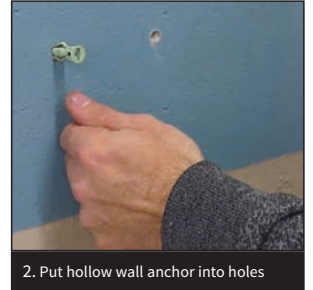


6. Install air filter assembly

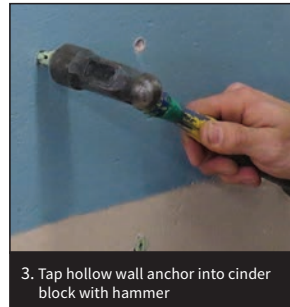
### MOUNT TO CINDER BLOCK/CONCRETE WALL



1. Hammer drill holes for hollow wall anchor



2. Put hollow wall anchor into holes



3. Tap hollow wall anchor into cinder block with hammer



4. Attach mounting bracket to wall



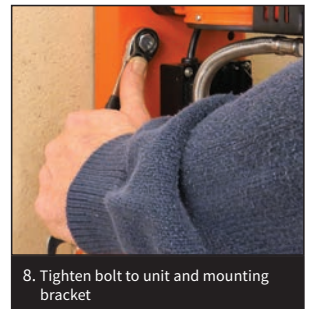
5. Locate hangers on back of unit



6. Hang unit onto the mounting bracket



7. Slip bolt through unit to mounting bracket



8. Tighten bolt to unit and mounting bracket



9. Install air filter assembly