

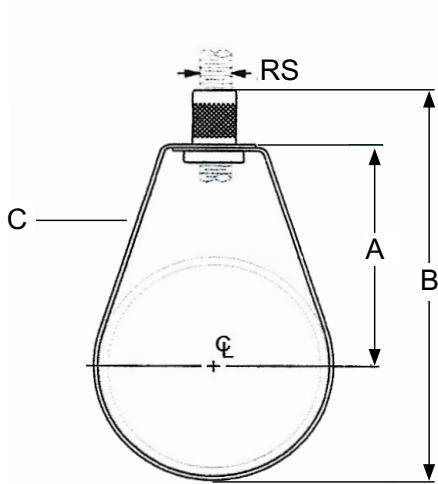
ADJUSTABLE SWIVEL RING HANGER

MODEL LVRH



FEATURES:

- **Size Range:** 1/2" – 8"
- **Material:** Pre Galvanized Steel
- **Max Temp:** 450° F
- Knurled swivel nut provides vertical adjustment
- UL/FM Listed and Approved
- Complies with NFPA 13 requirements



| Dimensions | | | | | | |
|----------------|----------|---------------|-------------|--------|---------|--------------|
| Pipe Size (In) | Max Load | Weight (Lbs.) | Rod Size RS | A (In) | B (In) | C Width (In) |
| 1/2 | 300 | 0.11 | 3/8 | 1 1/2 | 2 3/4 | 5/8 |
| 3/4 | | 0.11 | | 1 3/4 | 3 1/16 | |
| 1 | | 0.11 | | 1 7/8 | 3 5/16 | |
| 1 1/4 | | 0.11 | | 2 | 3 9/16 | |
| 1 1/2 | | 0.11 | | 2 3/16 | 3 7/8 | |
| 2 | | 0.12 | | 2 3/8 | 4 1/4 | |
| 2 1/2 | 525 | 0.22 | 1/2 | 3 1/16 | 5 3/16 | 13/16 |
| 3 | | 0.22 | | 3 1/4 | 5 11/16 | |
| 4 | 650 | 0.32 | | 4 | 6 7/8 | |
| 5 | 1,000 | 0.57 | | 4 5/8 | 8 1/4 | |
| 6 | | 0.68 | | 5 5/16 | 9 5/8 | |
| 8 | | 1.05 | | 7 1/4 | 12 3/8 | |

| PROJECT | APPROVAL STAMP |
|-----------------|--|
| PROJECT: | <input type="checkbox"/> APPROVED |
| ADDRESS: | <input type="checkbox"/> APPROVED AS NOTED |
| ENGINEER: | <input type="checkbox"/> NOT APPROVED |
| SUBMITTAL DATA: | REMARKS: |
| NOTES 1: | |
| NOTES 2: | |